



Live Tracking

Global Coverage

Mobile Phones

Customers using our products are able to:

- track using employees' Blackberry™, Android/Goggle, Apple iPhone or other GPS enabled phones
- lone worker and personnel at risk security tracing
- asset and fleet managers able to track multiple items
- live tracking for sporting events from cycling to sailing
- tracing people registered with disabilities



Solutions matched to your needs

Our tracking solutions are intended for everyone from a single individual, small business or large corporate organisations.

For individuals we offer a fully hosted and managed service.

Medium to large businesses have the option of hosting their own database tracking server.

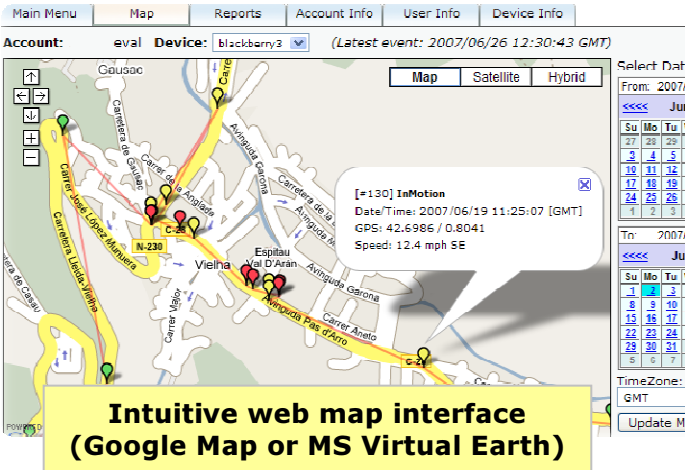
Our application runs on existing Java-enabled smart phones so there is no need to buy new mobile phone hardware.

Supports existing Bluetooth GPS 'pucks' or integral GPS receivers.

Track anywhere 24/7

GPS position reports exchanged over GSM mobile phone networks

High accuracy (typically 10-20 meters) due to GPS support. Far superior than inaccurate cell tower tracking - we can tell what side of the road you are driving!



Cost effective

Simple low fixed price annual subscription with unlimited position reports.

* You are entitled to unlimited tracking reports sent from your phone to our server. Your normal network provider charges still apply.

† Software is supported on most mobile phones supporting; MIDP-2.0, CLDC-1.1, JSR-82 Bluetooth



Tracking Features and Variants

We have a comprehensive set of tracking features spread across three levels of service. Whether you are a single individual, small business or large corporate organisation we have a solution for you.

	Bronze Service	Silver Service	Gold Service
Watchberry software for your Blackberry™, Android or iPhone providing configurable position reporting back to our tracking servers.	yes	yes	yes
Shared fully-hosted tracking server and web interface. Access controls used to ensure only you can see only your devices.	yes		
Your own fully-hosted tracking server and web interface solely for your dedicated use. You are assigned your own tracking database and separate web interface for added security.		yes	
Your own dedicated server hardware pre-configured with your own fully hosted tracking server and web interface. Maximum security in mission critical environments.			yes
Telephone support.		Optional	Optional
Premium managed Travel Service, comprising a 24/7 operations center ensuring safe travel for mission critical personnel.		Optional	Optional

PROJECT AUTOMATION LTD.

9 Ashbourne Road, Bournemouth,
Dorset, BH5 2JS